

An inconvenient truth in health research: science is always political

Fabio Balli, lead openvillage.ch

Download and cite: <https://doi.org/10.5281/zenodo.5503963>

Presented at the Digital Society Initiative – Health Community meeting.

Except when otherwise noted, Creative Commons Attribution 4.0 licence.

Can 'health' be imposed to someone without their consent?

“autonomy [...] promotes better mental and physical health.”

Ng, Ntoumanis, Thøgersen-Ntoumani, Deci, Ryan, Duda, Williams 2012

Today's challenges in society



“Autocratization turns viral”

“The level of democracy enjoyed by the average global citizen in 2020 is down to levels last found around 1990. [...] Ruling governments [...] polarize societies by disrespecting opponents.”

V-Dem Institute 2021



“Autocratization turns viral”

“The level of democracy enjoyed by the average global citizen in 2020 is down to levels last found around 1990. [...] Ruling governments [...] polarize societies by disrespecting opponents.”

V-Dem Institute 2021



“Trust in government declined”

“Switzerland [...] saw similar declines in scores for the functioning of government and civil liberties categories owing to nationwide lockdowns imposed.”

The Economist Intelligence Unit 2021



“Autocratization turns viral”

“The level of democracy enjoyed by the average global citizen in 2020 is down to levels last found around 1990. [...] Ruling governments [...] polarize societies by disrespecting opponents.”

V-Dem Institute 2021

“Deaths from hunger are outpacing the virus”

“This year, 20 million more people have been pushed to extreme levels of food insecurity [...] Since the pandemic began, the number of people living in famine-like conditions has increased sixfold.”

Oxfam 2021



“Trust in government declined”

“Switzerland [...] saw similar declines in scores for the functioning of government and civil liberties categories owing to nationwide lockdowns imposed.”

The Economist Intelligence Unit 2021



“Autocratization turns viral”

“The level of democracy enjoyed by the average global citizen in 2020 is down to levels last found around 1990. [...] Ruling governments [...] polarize societies by disrespecting opponents.”

V-Dem Institute 2021

“Deaths from hunger are outpacing the virus”

“This year, 20 million more people have been pushed to extreme levels of food insecurity [...] Since the pandemic began, the number of people living in famine-like conditions has increased sixfold.”

Oxfam 2021



“Trust in government declined”

“Switzerland [...] saw similar declines in scores for the functioning of government and civil liberties categories owing to nationwide lockdowns imposed.”

The Economist Intelligence Unit 2021

“The pandemic exacerbates pre-existing tensions and vulnerabilities”

“The general population is showing signs of fatigue; the ‘passive hold-out mode’ of the crisis has taken its toll. [...] Child psychiatry experts also observe a clear increase in treatment needs for suicidal thoughts and attempts.”

Swiss Federal Office of Public Health 2021

Is today's medical research empowering people?

“Method, then, unavoidably produces not only truths and non-truths, [...] but also arrangements with political implications.”

John Law 2004



**Different perspectives
embedded in medical research**





Self-management

- Patient follows a self-management plan
- Medical professional is a trainer
- Success: **compliance** to treatment



Self-management

- Patient follows a self-management plan
- Medical professional is a trainer
- Success: **compliance** to treatment

Coping with illness

- Patient builds a coherent self
- Medical professional is a supporter
- Success: **living well** with illness



Self-management

- Patient follows a self-management plan
- Medical professional is a trainer
- Success: **compliance** to treatment

Coping with illness

- Patient builds a coherent self
- Medical professional is a supporter
- Success: **living well** with illness

Whole system approach

- Patient achieves holistic care, supported by community
- Medical professional is a guide
- Success: **new opportunities** for healthy living



Self-management

- Patient follows a self-management plan
- Medical professional is a trainer
- Success: **compliance** to treatment

Coping with illness

- Patient builds a coherent self
- Medical professional is a supporter
- Success: **living well** with illness

Whole system approach

- Patient achieves holistic care, supported by community
- Medical professional is a guide
- Success: **new opportunities** for healthy living

Critical public health

- Patient challenges structural barriers to health
- Medical professional as potential oppressor or radical ally
- Success: **change in social and political structures**

Is the scientific culture up-to-date?

“In modern research, false findings may be the majority or even the vast majority of published research claims.”

John Ioannidis 2005



Some perspectives

embedded in research questions





Collection method

- historical data on diseases (quanti)
- co-creation + surveys (quali, quanti)





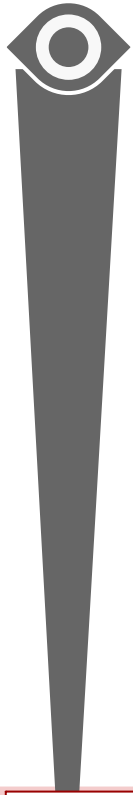
Collection method

- historical data on diseases (quanti)
- co-creation + surveys (quali, quanti)

Analysis method

- regression analysis (quanti)
- meta-narrative + stats (quali, quanti)





Collection method

- historical data on diseases (quanti)
- co-creation + surveys (quali, quanti)

Analysis method

- regression analysis (quanti)
- meta-narrative + stats (quali, quanti)

Interpretation method

- mathematical model (quanti)
- legislative theater (mixed)





Research methodology

- epidemiology (expert-based)
- participatory action research (community-driven)

Collection method

- historical data on diseases (quanti)
- co-creation + surveys (quali, quanti)

Analysis method

- regression analysis (quanti)
- meta-narrative + stats (quali, quanti)

Interpretation method

- mathematical model (quanti)
- legislative theater (mixed)





Research methodology

- epidemiology (expert-based)
- participatory action research (community-driven)

Research process

- collect → analyze → interpret → publish (waterfall)
- iterative gathering and sharing (creation-as-research)

Collection method

- historical data on diseases (quanti)
- co-creation + surveys (quali, quanti)

Analysis method

- regression analysis (quanti)
- meta-narrative + stats (quali, quanti)

Interpretation method

- mathematical model (quanti)
- legislative theater (mixed)





Theoretical angle

- self-management (mainstream)
- critical public health (emancipatory)

Research methodology

- epidemiology (expert-based)
- participatory action research (community-driven)

Research process

- collect → analyze → interpret → publish (waterfall)
- iterative gathering and sharing (creation-as-research)

Collection method

- historical data on diseases (quanti)
- co-creation + surveys (quali, quanti)

Analysis method

- regression analysis (quanti)
- meta-narrative + stats (quali, quanti)

Interpretation method

- mathematical model (quanti)
- legislative theater (mixed)





Paradigm

- universal, single truth (positivism, mechanism)
- contextual, subjective realities (socio-constructivist)

Theoretical angle

- self-management (mainstream)
- critical public health (emancipatory)

Research methodology

- epidemiology (expert-based)
- participatory action research (community-driven)

Research process

- collect → analyze → interpret → publish (waterfall)
- iterative gathering and sharing (creation-as-research)

Collection method

- historical data on diseases (quanti)
- co-creation + surveys (quali, quanti)

Analysis method

- regression analysis (quanti)
- meta-narrative + stats (quali, quanti)

Interpretation method

- mathematical model (quanti)
- legislative theater (mixed)





Rule of law

- Civil code → excluding property, academic competition
- local customs → shared use rights, knowledge commons

Paradigm

- universal, single truth (positivism, mechanism)
- contextual, subjective realities (socio-constructivist)

Theoretical angle

- self-management (mainstream)
- critical public health (emancipatory)

Research methodology

- epidemiology (expert-based)
- participatory action research (community-driven)

Research process

- collect → analyze → interpret → publish (waterfall)
- iterative gathering and sharing (creation-as-research)

Collection method

- historical data on diseases (quanti)
- co-creation + surveys (quali, quanti)

Analysis method

- regression analysis (quanti)
- meta-narrative + stats (quali, quanti)

Interpretation method

- mathematical model (quanti)
- legislative theater (mixed)





Social contract

- universal rules by experts (Westphalian constitutions)
- collectively lived, local customs (Indigenous oral tradition)

Rule of law

- Civil code → excluding property, academic competition
- local customs → shared use rights, knowledge commons

Paradigm

- universal, single truth (positivism, mechanism)
- contextual, subjective realities (socio-constructivist)

Theoretical angle

- self-management (mainstream)
- critical public health (emancipatory)

Research methodology

- epidemiology (expert-based)
- participatory action research (community-driven)

Research process

- collect → analyze → interpret → publish (waterfall)
- iterative gathering and sharing (creation-as-research)

Collection method

- historical data on diseases (quanti)
- co-creation + surveys (quali, quanti)

Analysis method

- regression analysis (quanti)
- meta-narrative + stats (quali, quanti)

Interpretation method

- mathematical model (quanti)
- legislative theater (mixed)

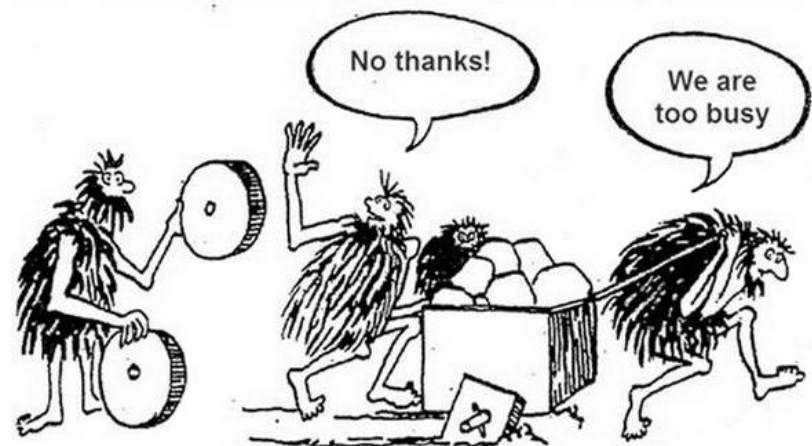


Next steps?

What about taking time to improve how we cooperate?

“public policy should [...] facilitate the development of institutions that bring out the best in humans.”

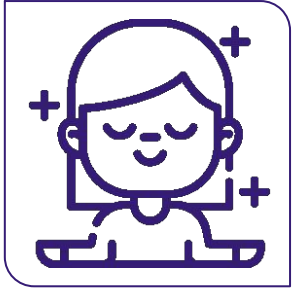
Elinor Ostrom 2009



An exercise

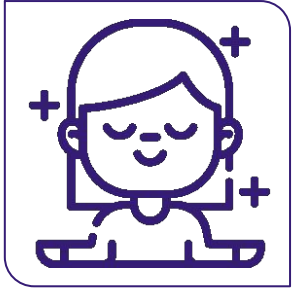
Imagine you want to know your stress level by checking your heart rate. You:

Imagine you want to know your stress level by checking your heart rate. You:

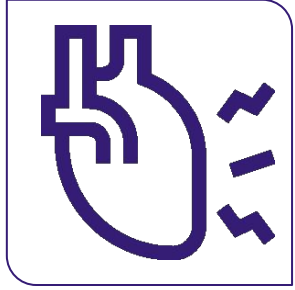


close your eyes
and observe
your **sensations**

Imagine you want to know your stress level by checking your heart rate. You:

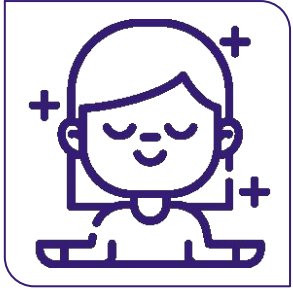


close your eyes
and observe
your **sensations**

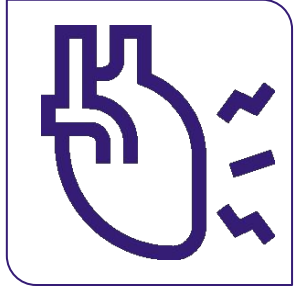


count the beats
you feel on your
wrist using a
watch

Imagine you want to know your stress level by checking your heart rate. You:



close your eyes
and observe
your **sensations**

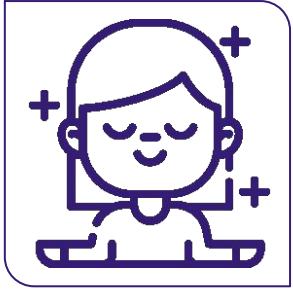


count the beats
you feel on your
wrist using a
watch

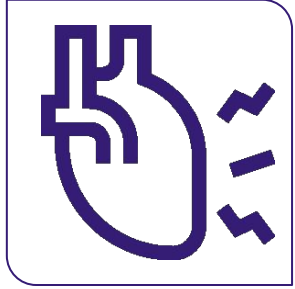


use an **app** that
measures your
pulse

Imagine you want to know your stress level by checking your heart rate. You:



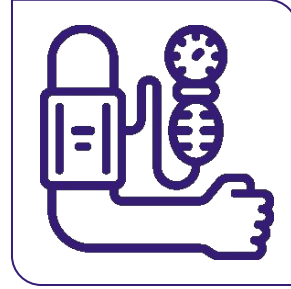
close your eyes
and observe
your **sensations**



count the beats
you feel on your
wrist using a
watch

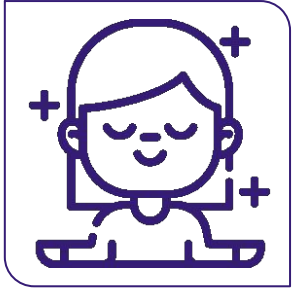


use an **app** that
measures your
pulse

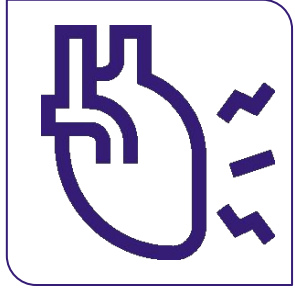


use a blood
pressure
monitor at the
pharmacy

Imagine you want to know your stress level by checking your heart rate. You:



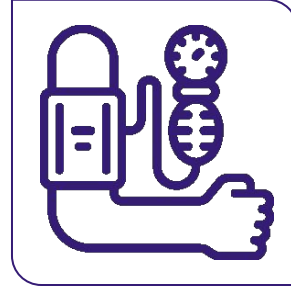
close your eyes
and observe
your **sensations**



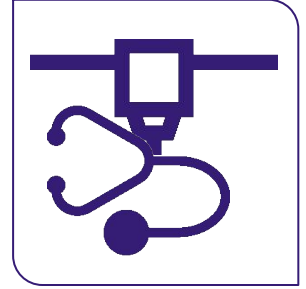
count the beats
you feel on your
wrist using a
watch



use an **app** that
measures your
pulse

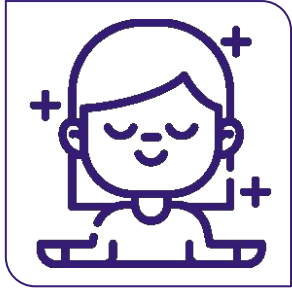


use a blood
pressure
monitor at the
pharmacy

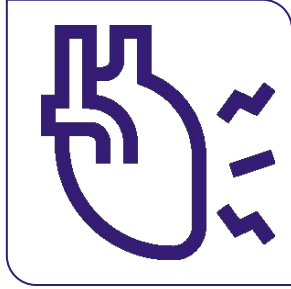


3d-print an
open-source
stethoscope
and use it

Imagine you want to know your stress level by checking your heart rate. You:



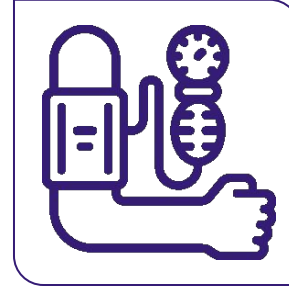
close your eyes
and observe
your **sensations**



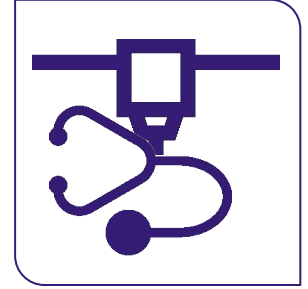
count the beats
you feel on your
wrist using a
watch



use an **app** that
measures your
pulse



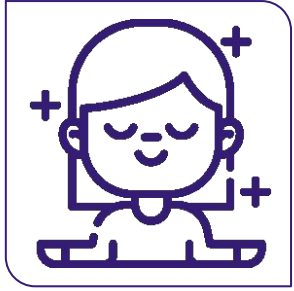
use a blood
pressure
monitor at the
pharmacy



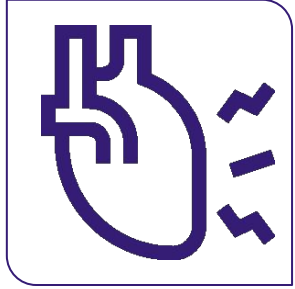
3d-print an
open-source
stethoscope
and use it

→ which options provides you with the *minimal* required information?

Imagine you want to know your stress level by checking your heart rate. You:



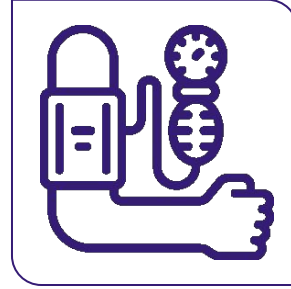
close your eyes
and observe
your **sensations**



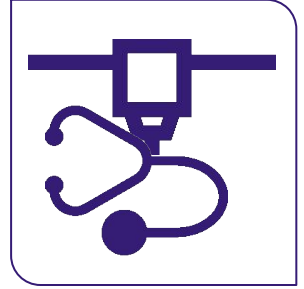
count the beats
you feel on your
wrist using a
watch



use an **app** that
measures your
pulse



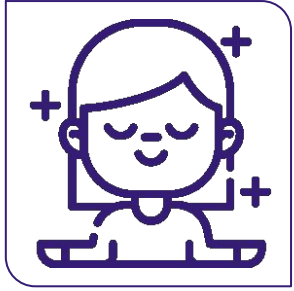
use a blood
pressure
monitor at the
pharmacy



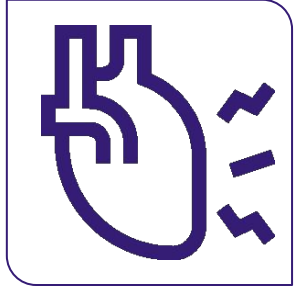
3d-print an
open-source
stethoscope
and use it

- which options provides you with the *minimal* required information?
- which option enables you to *significantly* develop your skills?

Imagine you want to know your stress level by checking your heart rate. You:



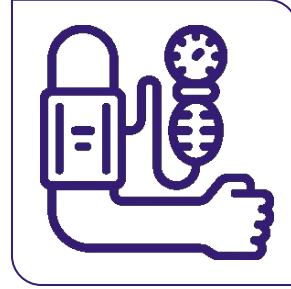
close your eyes
and observe
your **sensations**



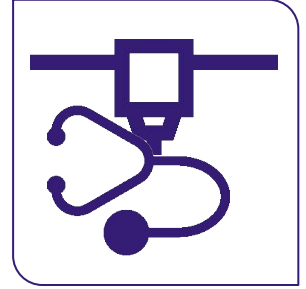
count the beats
you feel on your
wrist using a
watch



use an **app** that
measures your
pulse



use a blood
pressure
monitor at the
pharmacy



3d-print an
open-source
stethoscope
and use it

- which options provides you with the *minimal* required information?
- which option enables you to *significantly* develop your skills?
- what are the *implicit beliefs* embedded in each option?

Bibliography

References

- Ostrom E. **Beyond markets and states: polycentric governance of complex economic systems**. Prize lecture. The Sveriges Riksbank Prize in Economic Sciences in Memory of Alfred Nobel 2009. https://www.nobelprize.org/uploads/2018/06/ostrom_lecture.pdf
- V-Dem Institute. **Autocratization turns viral. Democracy report 2021**. 2021. <https://www.v-dem.net/files/25/DR%202021.pdf>
- The Economist Intelligence Unit. **Democracy index 2020. In sickness and in health?** 2021. <https://pages.eiu.com/rs/753-RIQ-438/images/democracy-index-2020.pdf>
- Oxfam. **The hunger virus multiplies: deadly recipe of conflict, covid19 and climate accelerate world hunger**. 2021. https://oi-files-d8-prod.s3.eu-west-2.amazonaws.com/s3fs-public/2021-07/The%20Hunger%20Virus%202020_media%20brief_EN.pdf
- Swiss Federal Office of Public Health. **Schlussbericht Einfluss der Covid-19-Pandemie auf die psychische Gesundheit**. Bundesamt für Gesundheit 2021. [https://www.bag.admin.ch/dam/bag/de/dokumente/psychische-gesundheit/covid-19/covid-19-psychische-gesundheit-schlussbericht.pdf](https://www.bag.admin.ch/dam/bag/de/dokumente/psychische-gesundheit/covid-19/covid-19-psychische-gesundheit-schlussbericht.pdf.download.pdf/covid-19-psychische-gesundheit-schlussbericht.pdf)
- Law J. **After Method: Mess in Social Science Research**. Routledge 2004. <https://www.routledge.com/After-Method-Mess-in-Social-Science-Research/Law/p/book/9780415341752>
- Greenhalgh T. **Chronic illness: beyond the expert patient**. BMJ 2009; 338(7695). <http://www.jstor.org/stable/20512333>
- Capra F, Mattei U. **The Ecology of Law: toward a legal system in tune with Nature and Community**. Berrett-Koehler 2015. <https://www.fritjofcapra.net/the-ecology-of-law/>
- Creswell JW, Plano Clark VL. **Designing and conducting Mixed Methods research**. SAGE 2017. <https://us.sagepub.com/en-us/nam/research-design/book255675>
- Ioannidis JPA. **Why most published research findings are false**. PLoS Medicine 2005; 2(8).. <https://doi.org/10.1371/journal.pmed.0020124>
- Ng JYY, Ntoumanis N, Thøgersen-Ntoumani C, Deci EL, Ryan RM, Duda JL, Williams GC. **Self-determination theory applied to health contexts: a meta-analysis**. Perspectives on Psychological Science 2012. <https://doi.org/10.1177/1745691612447309>

Author's work

- Balli F. **Global crises, democratic solutions—within days. Using Internet to empower citizens, reach popular consensus, and ensure democratic decision-making [Preprint]**. Zenodo 2021. <https://doi.org/10.5281/zenodo.5497574>
- Balli F. **Health technology and medical innovation: why open-source is vital**. Geneva-Tsinghua SDG Summer School; 2021 July 05; Geneva, Switzerland. <https://doi.org/10.5281/zenodo.5053608>

Additional resources

- Aubin D, Nahrath S. **De la plura dominia à la propriété privative : l'émergence de la conception occidentale de la propriété et ses conséquences pour la régulation des rapports sociaux à l'égard de l'environnement et du foncier**. Pacific credo 2015. <http://books.openedition.org/pacific/309>
- Chapman OB, Sawchuk K. **Research-Creation: Intervention, analysis and "family resemblances"**. Canadian Journal of Communication 2012; 37(1). <https://doi.org/10.22230/cjc.2012v37n1a2489>
- Gøtzsche P. **Rational diagnosis and treatment: evidence-based clinical decision-making**. Wiley-Blackwell 2007. <https://www.wiley.com/en-us/Rational+Diagnosis+and+Treatment%3A+Evidence+Based+Clinical+Decision+Making%2C+4th+Edition-p-9780470515037>
- Guba EG, Lincoln YS. **Epistemological and methodological bases of naturalistic inquiry**. Educational Communication and Technology 1982; 30(4). <https://www.jstor.org/stable/30219846>
- Mattei U. **Three patterns of Law: Taxonomy and change in the world's legal systems**. The American Journal of Comparative Law 1997; 45(1). <https://doi.org/10.2307/840958>
- Hong NQ, Pluye P et al. **Mixed Methods appraisal tool (MMAT) version 2018**. User guide. 2018. https://mixedmethodsappraisaltoolpublic.pbworks.com/w/file/attach/127916259/MMAT_2018_criteria-manual_2018-08-01_ENG.pdf
- Ridde V, Dagenais C (ed). **Évaluation des interventions de santé mondiale: Méthodes avancées**. ESBC 2019. <https://scienceetbiencommun.pressbooks.pub/evalsantemondiale/>
- Tyson L. **Critical theory today: a user-friendly guide**. Routledge 2015. <https://www.routledge.com/Critical-Theory-Today-A-User-Friendly-Guide/Tyson/p/book/9780415506755>

Thank you

